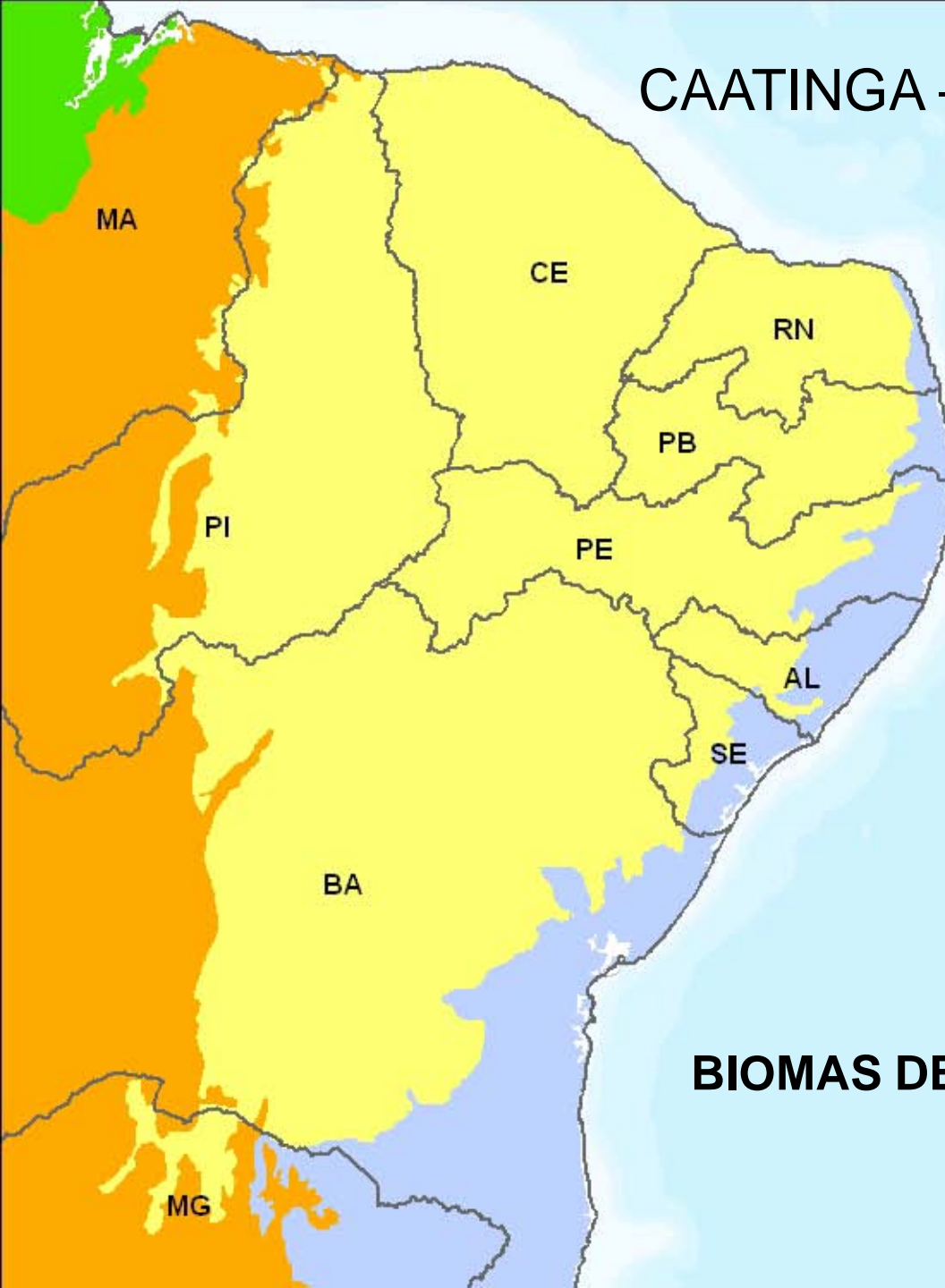


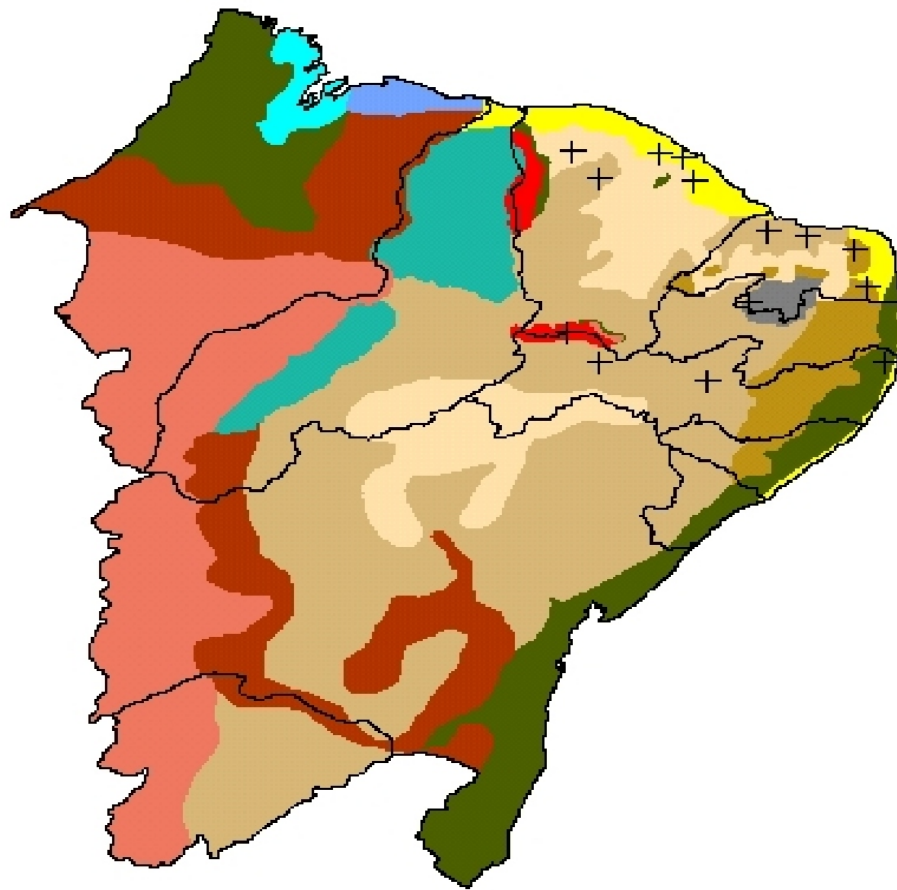
# CAATINGA – DISTRIBUIÇÃO ORIGINAL















## Biomas IBGE

-  Amazônia
-  Caatinga
-  Cerrado
-  Mata Atlântica

**BIOMAS DEFINIDOS PELO IBGE EM 2004**



- |  |   |
|--|---|
|  Vegetação litorânea          |  Restinga                       |
|  Floresta ombrófila densa   |  Carrasco                     |
|  Caatinga arbórea           |  Contato caatinga/cerrado     |
|  Caatinga arbustiva arbórea |  Cerrado                      |
|  Caatinga arbustiva         |  Floresta estacional decidual |
|  Seridó                     |  Mangues                      |

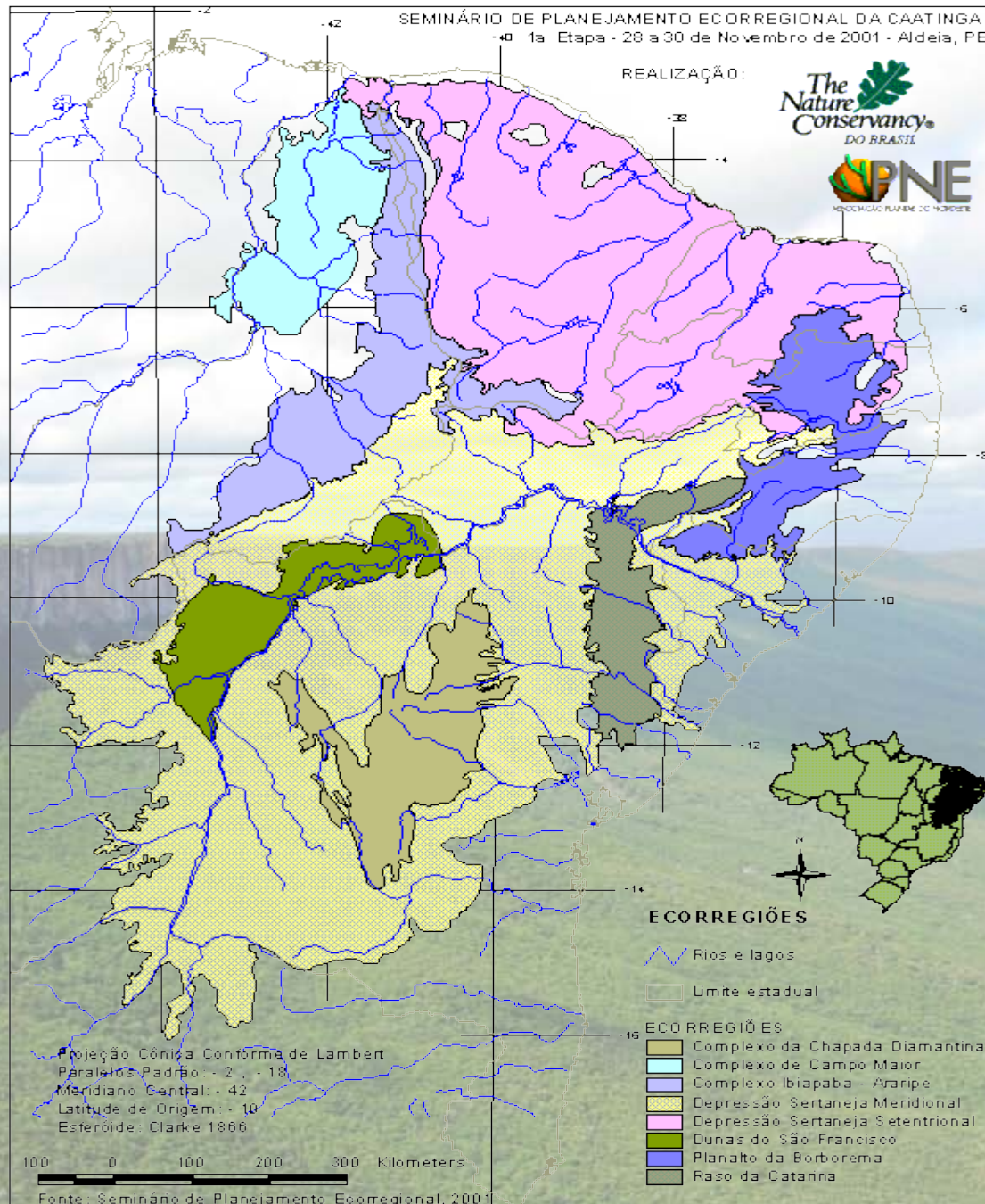
## FISIONOMIAS VEGETACIONAIS DO NORDESTE



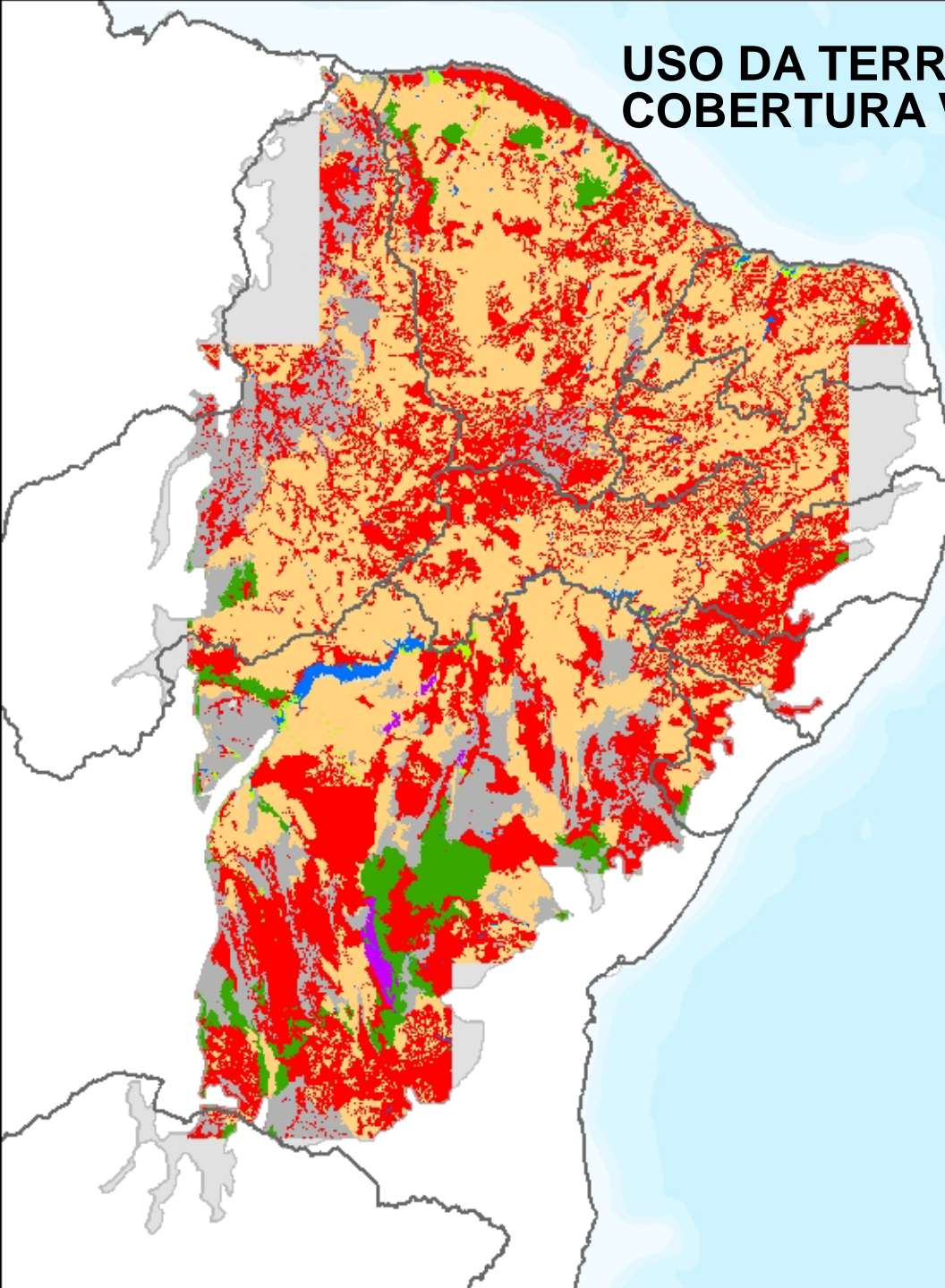
REALIZAÇÃO:

The Nature Conservancy  
DO BRASIL

PNE  
PROTEÇÃO NATUREZA DO NORDESTE



# USO DA TERRA E COBERTURA VEGETAL, 2007 – PROBIO/MMA



Estados

Uso e Cobertura

Áreas Antrópicas

Contatos

Corpos d'água

Dunas

Florestas

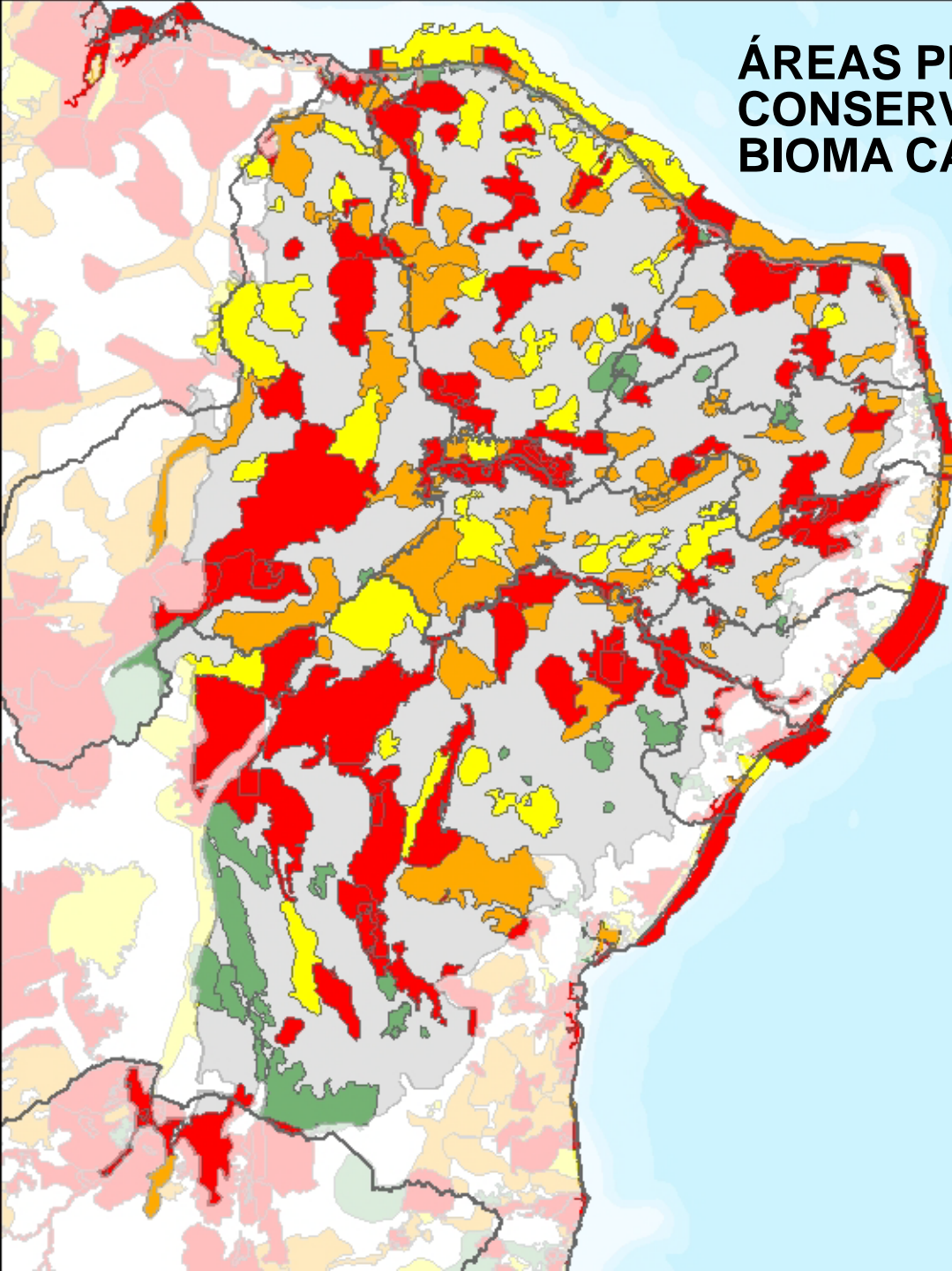
Formações Pioneiras

Refúgios

Savanas



# ÁREAS PRIORITÁRIAS PARA A CONSERVAÇÃO NO BIOMA CAATINGA - 2006



Estados



Caatinga

Importância Biológica



Alta



Muito Alta



Extremamente Alta



Insuficientemente Conhecida